



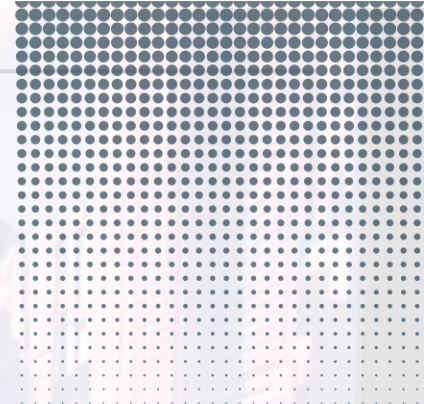
# **AUDAX GROUP**

Envision The World With Technology

# All-in-one technology Solution Provider for 16 Years

## Interactive, Digital, Experiential

Audax Visual provide a one-stop cutting-edge solutions for  
3D content, interactive program and experiential design



# Our Solutions



## Audax Visuals

3D Services  
AR&VR Solution  
Immersive Hall Desgin  
Interactive Program

## MAXHUB

Conference Solution  
Education Solution  
Display Solution



## BellaBot

Premium Delivery Robot



## AI Robotics

Intellegent Delivery Robot  
Cleanning Robot  
Cooking Robot

## EcoProp

Property smart platform  
AI+VR Home reviewing



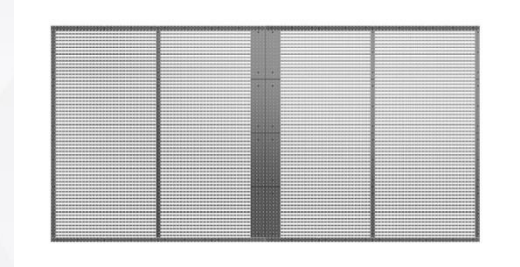
# Product Range



**Indoor LED Screen**



**LED Poster**



**Transparent Screen**



**Outdoor LED**



**Conference IFP (Maxhub)**



**Commercial Display**



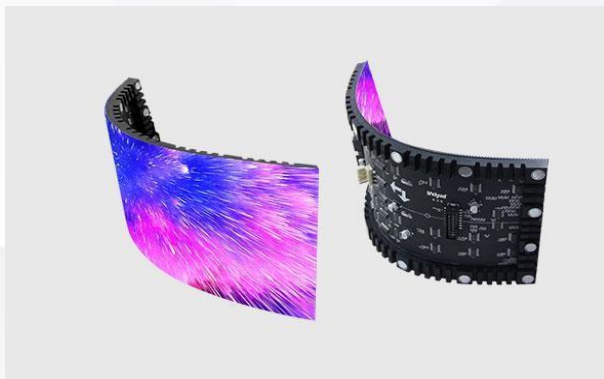
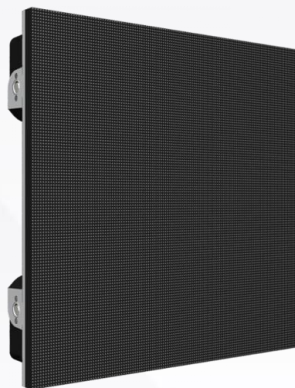
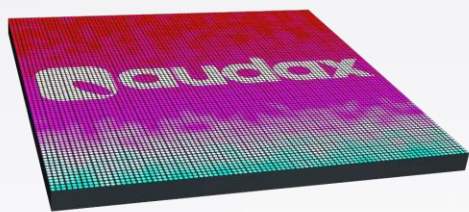
**Integrated LED Wall Raptor  
Maxhub**



**Transparent OLED TV**

# **Indoor LED Screen**

# Product Photos



# Indoor LED Application Scenario



Stage/Event



Commercial Display



Public Display



Command Center



Experiential Center



Meeting Room

## Indoor LED Parameters

LED type	P1.2	P1.5	P1.8	P2	P2.5	P3
Pixel pitch (mm)	1.25	1.53	1.86	2.0	2.5	3.06
Panel dimensions (W*H*D, mm)	320*160 (640*480)	320*160 (640*480)	320*160 (640*480)	320*160 (640*480)	320*160 (640*480)	320*160 (640*480)
Panel resolution	512×384	418×313	344×258	320×240	256×192	213×160
Panel material	Die casting aluminum/Steel Cabinet					
Brightness (nit)		800-1000	800-1000	800-1000	800-1000	800-1000
Refresh rate (Hz)	≥3840	≥3840	≥3840	≥3840	≥3840	≥3840
Contrast ratio	4000:1	4000:1	4000:1	4000:1	4000:1	4000:1
Lifetime (h)	100000					
Panel maintenance type	Fully front					



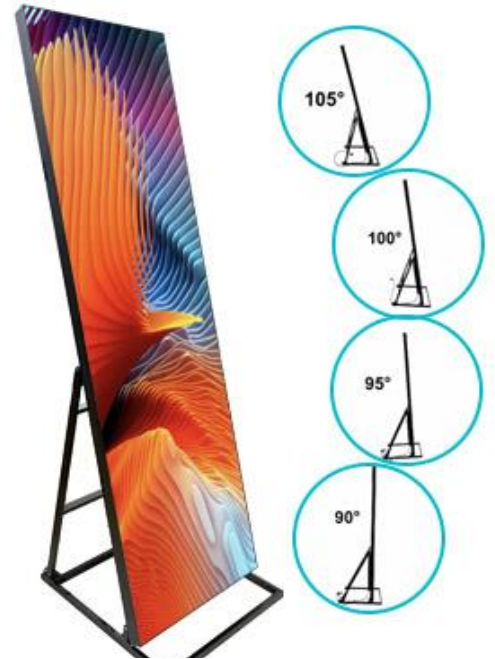
## COB Indoor LED Parameters

LED type	R0.9	R1.2	M1.2	M1.5	M1.9
Pixel pitch (mm)	0.93	1.25	1.26	1.58	1.9
Panel dimensions (W*H*D, mm)	600 x 337.5 x 59.5	600 x 337.5 x 59.5	304 x 342 x 57.5 608 x 342 x 72	304 x 342 x 57.5 608 x 342 x 72	304 x 342 x 57.5 608 x 342 x 72
Panel resolution	640 x 360	480 x 270	240 x 270 480 x 270	192 x 216 384 x 216	160 x 180 320 x 180
Panel material	Die Casting Aluminum				
Brightness (nit)	450	600	600	600	600
Refresh rate (Hz)	3000	3000	30000	30000	30000
Contrast ratio	4000:1	4000:1	4000:1	4000:1	4000:1
Lifetime (h)	100000 hours				
Panel maintenance type	Front				

## COB Indoor All-in-one LED Parameters (with touch function)

LED Type	CB110H	CB138H	CB165H
Screen Size	110 inches	138 inches	165 inches
Panel Type	COB	COB	COB
Screen Resolution	1920 x 1080	1920 x 1080	1920 x 1080
Pixel Pitch (mm)	1.2	1.5	1.9
Screen Brightness(cd/m2)	450	450	450
Refresh Rate (Hz)	3000	3000	3000
Installation/ Maintenance Mode	Wall hanging, Moving Bracket(Optional); Front Maintenance		
Buildt-in System	Android 8.0 / Window 10 Dual System		
Touch Technology	Infared Touch, 10 points		

# **LED Poster**



## Multiple Installation



Stand Alone



With Wheels Easy Moving



Hanging



Wall Mounted



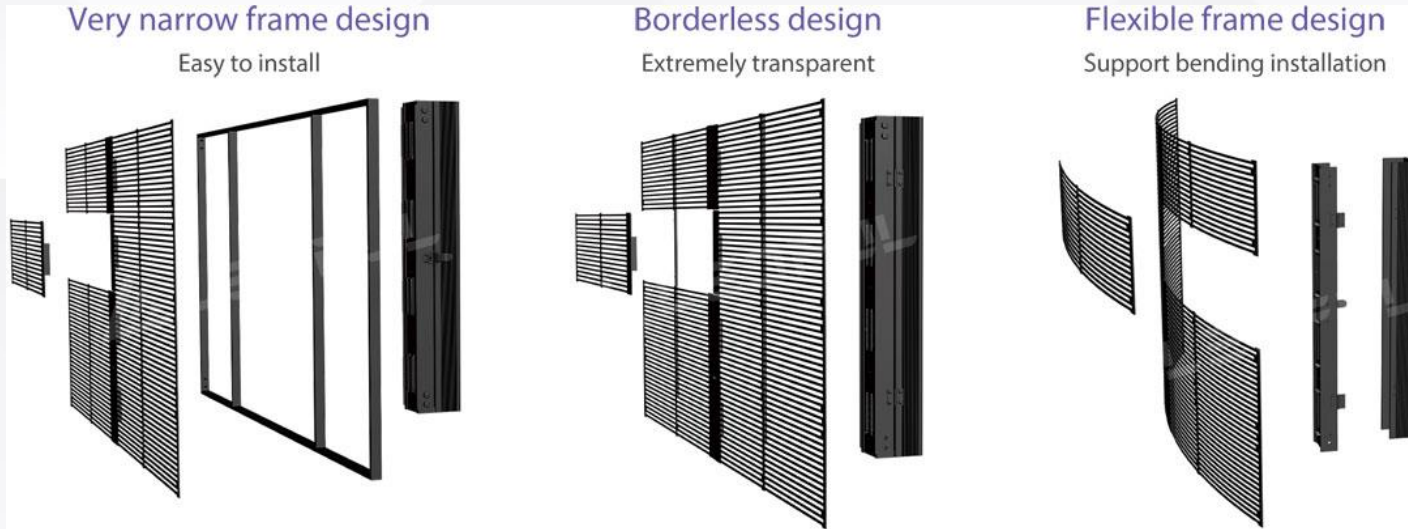
DIY Creative Installation

## LED Poster Parameters

	Poster 1.8	Poster 2.5
LED type	SMD2121	SMD2121
Pixel pitch	P1.8	P2.5
LED Dimension (MM)	640x1920x39 (L*H*T)	640x1920x39 (L*H*T)
Resolution(W× H)	355*1066	256*768
Refresh Rate (Hz)	≥3840Hz	≥3840Hz
LED module layout	2*8	2*8
Brightness	800 (adjustable)	800 (adjustable)
Net. weight/set	36kg	36kg
Max.Power consumption	700W/m <sup>2</sup>	700W/m <sup>2</sup>
Avg.Power consumption	230W/m <sup>2</sup>	230W/m <sup>2</sup>
Viewing ( H/V°)	160/160	160/160
Lifetime(50% brightness)	80,000 hrs	80,000 hrs

# **Transparent LED Screen**

# Product Details



Ready-to-use panel with superior quality



**Super Transparency**



**Self-adhesive Film**



**Full Color Expression**



**Superb Expandability and Flexibility**

# Transparent LED Application Scenario



Commercial Display



Retail Display



Cooperate Display



Information Display



Shopping Mall Display



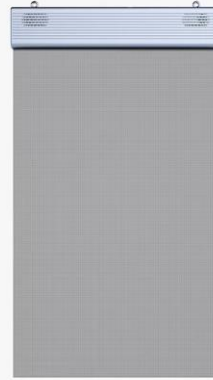
# References



## Transparent LED Parameters

Model Type	P2.6	P3-3	P3.91	P7.81	P10.42	P15.625
Cabinet Dimension	1000*500	1000*500	1000*500	1000*1000	1000*1000	1000*1000
Transparency	45%	42%	45%	55%	65%	70%
Pixel Density /m2	73728	102400	65536	16384	9216	4096
Pixel Distance (mm)	W2.6*H5.2	W3.125*H3.125	W3.91*H3.91	W7.81*H7.81	W10.42*H10.42	W15.625*H15.625
Brightness cd/m2	4000	4000	4000	4500	4000	4000
Max Power Consumption	800W	800W	800W	800W	700W	600W
Thickness	80mm	80mm	80mm	80mm	80mm	80mm
Weight	5kg/m2	5kg/m2	5kg/m2	6kg/m2	6kg/m2	6kg/m2

# **Holographic Invisible Screen**



## Product advantages



### Standard all-in-one machine

Built-in sending card, only one power supply cable, plug in and play.



### Minimal installation and maintenance

Standard hanging structure, easy installation, widely applied in different kinds of installation environment.



### Free combined size

55", 70", 100", 135", to satisfy different display requirements.



### Transparent and invisible whole screen

Whole screen transparent and invisible, it does not block any view and light.



### Floating image

Display effect of 3D holographic and bare-eye AR visual effect, eye-catching and attractive.



### High-resolution display quality

Horizontal and vertical pixels equal spacing, Light/Driver Integrated, Picture Grayscale 16 bit.



## Product advantages



### Plug and play without assembly

Easy to deliver, detachable, removable.



### Spatial floating image

3D Holography, Spatial floating image



### Hd display quality

Horizontal and vertical pixels equal spacing, Light/Driver Integrated, Picture Grayscale 16 bit.



### High brightness and contrast

High brightness 5000cd/m<sup>2</sup>  
High contrast ratio 99:1



### Ultra-high transparency

The display panel has no splicing structure, and the transparent display occupies more than 95% of the whole machine.

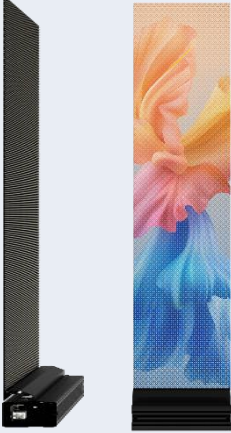





### Multiple installation modes

A variety of installation methods such as lifting, vertical installation, lifting and vertical combination can be freely selected.



# Parameters

Model	M3	M6	A3-2	A3-4
				
Pixel Pitch (mm)	Horizontal :3.91/Vertical :3.91	Horizontal :6.25/Vertical :6.25	Horizontal :3.91/Vertical :3.91	Horizontal :3.91/Vertical :3.91
Dots (dot/ m <sup>2</sup> )	65536	25600	65536	65536
Transparency	80%	90%	80%	80%
Display Area(mm(w*h)	250x1000/250x1171	250x1175/250x1475	1000*2000	2000*2000
Panel Dimension (mm)(w*h)	250x1025/250x1200	250x1200/250x1500	1021x2452 (Hanging D75/Standing D500)	2021x2452 (Hanging D75/Standing D500)
Panel Resolution (dot)	64x256/64x300	40x188/40x236	256x512	512x512
Weight (Kg/SET)	6	5	40	60
Brightness (cd/ m <sup>2</sup> )	≥3000	≥5000	≥3000	
Scanning Method	Single point, single control, static drive		Single point, single control, static drive	
Package Forms	Lamp Driver in one package		Lamp Driver in one package	
Lifespan	≥ 100,000 hrs		≥ 100,000 hrs	
Grayscale level	16bit		16bit	
Max Consumption (W/ m <sup>2</sup> )	1000		1000	
Average Consumption (W/ m <sup>2</sup> )	375		375	
LED Control System	Simultaneous/asynchronous		Simultaneous/asynchronous	
Input working voltage	AC100~240V 50/60Hz		AC100~240V 50/60Hz	
Module Operating Voltage	DC4.2V ±0.2V		DC4.2V ±0.2V	
operating temperature	0~50°C		0~50°C	
Operating humidity	20%RH ~ 85%RH, non-condensing		20%RH ~ 85%RH, non-condensing	
Storage temperature	-20°C ~60°C		-20°C ~60°C	
Storage humidity	10%RH ~ 85%RH, non-condensing		10%RH ~ 85%RH, non-condensing	
Material	/		Aluminum Alloy	
Installation environment	Indoor		Indoor	
Packaging and transportation	Pearl Cotton+Wooden Case/Air		Pearl Cotton + Wooden Case/Air	

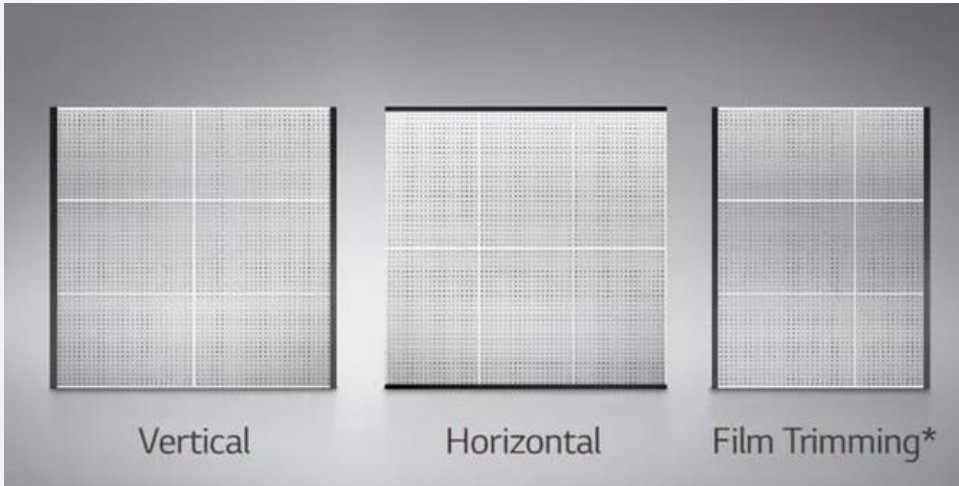
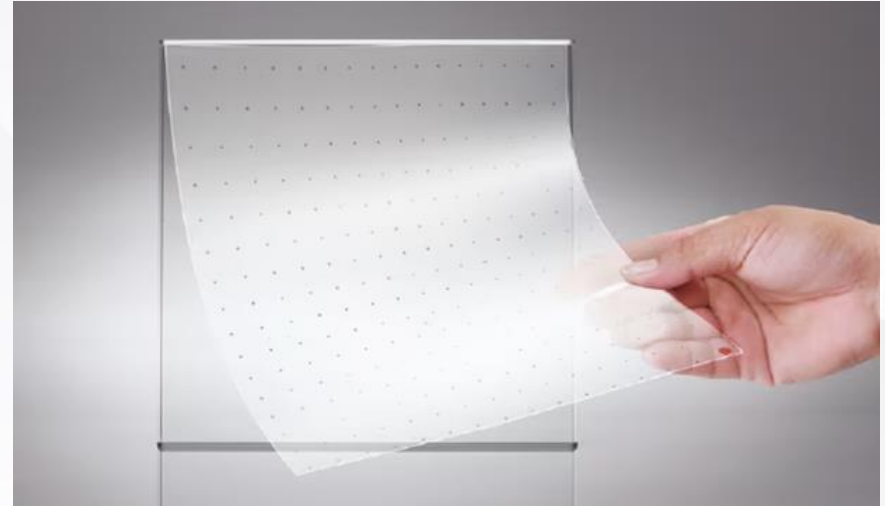
# **Transparent LED Film**



Easy Space Innovation

## Self-adhesive Film

The transparent LED film is self-adhesive, so it can be easily attached to the surfaces of existing window glass without the need for any complicated construction



Easy Space Innovation

## Superb Expandability and Flexibility

The size and layout of the film can be customized to fit in to the installation area. It can be expanded by adding more films in a vertical or horizontal way, or cut in parallel with the bezel to meet size requirements.

Easy Space Innovation  
**Curved Format  
Supported**

The transparent LED film supports curvatures up to 1,100R Convex and Concave for curved glass or window applications. This allows a wider range of venues to be redesigned as a landmark.



## LED Film Screen Parameters

Model Type	P4-8	P5-10	P6.5	P10	P15.6
Film Dimension	1000*320	1000*320	1000*320	1000*320	1000*375
Transparency	60%	68%	50%	68%	85%
Pixel Density /m2	31250	20000	23670	10000	4096
Pixel Distance (mm)	W4*H8	W5*H10	W6.5*H6.5	W10*H10	W15.6*H15.6
Brightness cd/m2	1000-4000	1000-4000	1000-4000	1000-4000	1000-4000
Max Power Consumption	800W	800W	800W	800W	800W
Thickness	3mm	3mm	3mm	3mm	3mm
Weight	3kg/m2	3kg/m2	3kg/m2	3kg/m2	3kg/m2

# **Outdoor LED Screen**

# Product Details



## Ultra-clear Picture Quality

7500nits high brightness intelligent module design, support HDR, 16bit +9bit processing mode, display more dynamic range and image details



## 7680Hz High RefreshRate

- > The image is very stable under the cameras of the mobile phones.
- > Barcode is readable by the mobile phones to enable a more efficient interactive advertisement.



## 45 Degree Beveled Edge Design

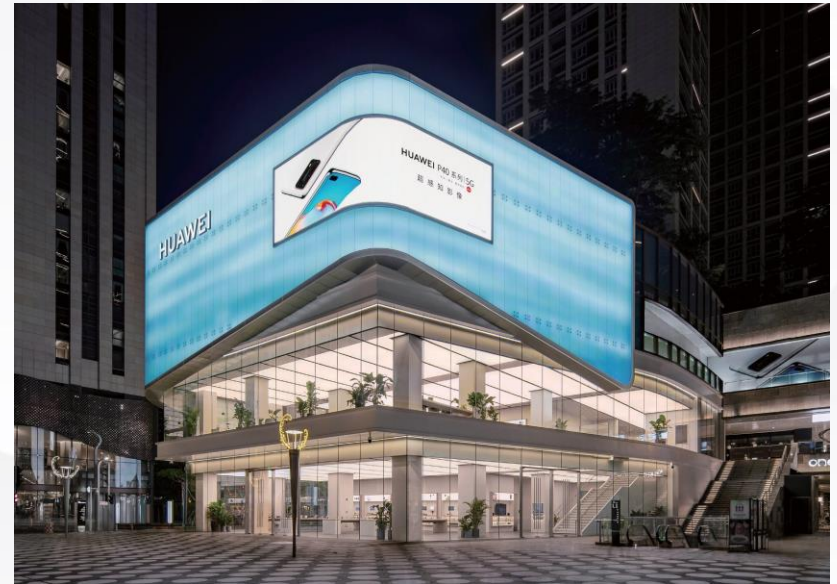
Can be spliced into right angles or curved shapes.



## Waterproof Air Pressure Adjustable Device

Waterproof breathing valve can ensure that the gas can go in and out freely, while water molecules will not enter, and it is safe to use in rainy and wet conditions.

# References



# Outdoor LED Parameters

Item	NHV3	NHV3H	NHV4	NHV4H	NHV6	NHV6H	NHV8	NHV8H	NHV10	NHV10H
Pixel Configuration	SMD	SMD	SMD	SMD	SMD	SMD	SMD	SMD	SMD	SMD
Pitch (mm)	3.3	3.3	4	4	6.6	6.6	8	8	10	10
Module Resolution (WxH)	96x144	96x144	80x120	80x120	48x72	48x72	40x60	40x60	32x48	32x48
Module Size (mm)(WxHxD)	320x480x20	320x480x20	320x480x20	320x480x20	320x480x20	320x480x20	320x480x20	320x480x20	320x480x20	320x480x20
Module Weight (Kg)	2.1	2.1	2.1	2.1	2.1	2.1	2.1	2.1	2.1	2.1
Module Composition (WxH)	4x2	4x2	4x2	4x2	4x2	4x2	4x2	4x2	4x2	4x2
Cabinet Resolution (WxH)	384x288	384x288	320x240	320x240	192x144	192x144	160x120	160x120	128x96	128x96
Cabinet Size (mm)(WxHxD)	1280x960x75	1280x960x75	1280x960x75	1280x960x75	1280x960x75	1280x960x75	1280x960x75	1280x960x75	1280x960x75	1280x960x75
Unit Area (㎡)	1.2288	1.2288	1.2288	1.2288	1.2288	1.2288	1.2288	1.2288	1.2288	1.2288
Cabinet Weight (kg)	26	26	26	26	26	26	26	26	26	26
Pixel Density (pixel/㎡)	90000	90000	62500	62500	22500	22500	15625	15625	10000	10000
Surface Flatness (mm)	≤0.3	≤0.3	≤0.3	≤0.3	≤0.3	≤0.3	≤0.3	≤0.3	≤0.3	≤0.3
Brightness Calibration	Yes	Yes	Yes	Yes	Yes	Yes	Yes	Yes	Yes	Yes
Color Calibration	Yes	Yes	Yes	Yes	Yes	Yes	Yes	Yes	Yes	Yes
Brightness (nits)	4000	5500	4500	6000	5000	7500	5000	7500	5000	7500
Color Temperature(K)	3000—10000 Adjustable									
Horizontal Viewing Angle (°)	150	150	150	150	150	150	150	150	150	150
Vertical Viewing Angle (°)	150	150	150	150	150	150	150	150	150	150
Deviation of LED Luminance Center	<3%	<3%	<3%	<3%	<3%	<3%	<3%	<3%	<3%	<3%
Brightness Uniformity	≥97%	≥97%	≥97%	≥97%	≥97%	≥97%	≥97%	≥97%	≥97%	≥97%
Chromaticity Uniformity	±0.003Cx,Cy within									
Contrast Ratio	3000:1	3000:1	3000:1	3000:1	3000:1	3000:1	3000:1	3000:1	3000:1	3000:1
Max Power Consumption (W/㎡)	720	720	720	720	720	720	720	720	720	720
Average Power Consumption (W/㎡)	295	295	285	285	265	265	255	255	240	240
Power Supply	AC100 ~ 240V (50/60Hz)									
Drive Mode	Constant current drive									
Scanning Mode	12s	12s	10s	10s	6s	6s	4s	4s	2s	2s
Frame Rate (Hz)	50&60	50&60	50&60	50&60	50&60	50&60	50&60	50&60	50&60	50&60
Refresh Rate (Hz)	7680	7680	7680	7680	7680	7680	7680	7680	7680	7680
Lifetime (hrs)	100,000	100,000	100,000	100,000	100,000	100,000	100,000	100,000	100,000	100,000
IP Level	IP67	IP67	IP67	IP67	IP67	IP67	IP67	IP67	IP67	IP67
Operation Temperature(°C)	-30 ~50	-30 ~50	-30 ~50	-30 ~50	-30 ~50	-30 ~50	-30 ~50	-30 ~50	-30 ~50	-30 ~50
Storage Temperature(°C)	-40 ~60	-40 ~60	-40 ~60	-40 ~60	-40 ~60	-40 ~60	-40 ~60	-40 ~60	-40 ~60	-40 ~60
Operation Humidity (RH)	10~80% no condensation									
Storage Humidity (RH)	10~85% no condensation									

# **Smart Conference Panel**

Maxhub



# Product Details

MAXHUB provides not just a smart panel, but solution for presentation, collaboration, brainstorming and teleconferencing.



**1 Teleconferencing**  
Let's Meet Online

**2 Huddle & Brainstorming**  
Visualise Your Idea in a Better Way

**3 Training**  
Annotate at Will

**4 Presentation**  
Reverse Control,  
Stylish Your Speech

# Product Details



# Specification

## Display

Model	C5530	C6530	C7530	C8630
Diagonal Size(inch)	55	65	75	86
Backlight	Direct-lit LED	Direct-lit LED	Direct-lit LED	Direct-lit LED
Panel Technology	IPS	IPS	VA	VA
Aspect ratio	16 : 9	16 : 9	16 : 9	16 : 9
Resolution	3840 x 2160	3840 x 2160	3840 x 2160	3840 x 2160
Response time	8ms	8ms	8.5ms	8ms
Refresh Rate	60Hz	60Hz	60Hz	60Hz
Brightness(typ)	350cd/m <sup>2</sup>	350cd/m <sup>2</sup>	350cd/m <sup>2</sup>	350cd/m <sup>2</sup>
Contrast Ratio	1200 : 1	1200 : 1	5000 : 1	4000 : 1
Viewing Angle	178°/178°	178°/178°	178°/178°	178°/178°
Color Gamut(typ)	90%	90%	90%	90%
Display Orientation	Landscape	Landscape	Landscape	Landscape
Operation Hour	16/7	16/7	16/7	16/7

## Touch System

Touch	IR Touch	IR Touch	IR Touch	IR Touch
Max Touch Points Supported	20	20	20	20
Accuracy	±1mm	±1mm	±1mm	±1mm
Object Recognition Range	≥2mm	≥2mm	≥2mm	≥2mm
Glass	zero parallax, 3mm Angi-glare, antibacterial	zero parallax, 3mm Angi-glare, antibacterial	zero parallax, 4mm Angi-glare, antibacterial	zero parallax, 4mm Angi-glare, antibacterial
Supported Operating System(Touch Return)	Windows10/Windows8/Windows7/WindowsXP/Android/Linux/Mac OS X/Chrome OS	Windows10/Windows8/Windows7/WindowsXP/Android/Linux/Mac OS X/Chrome OS	Windows10/Windows8/Windows7/WindowsXP/Android/Linux/Mac OS X/Chrome OS	Windows10/Windows8/Windows7/WindowsXP/Android/Linux/Mac OS X/Chrome OS

## Connectivity

Input	HDMI IN x 1, USB 2.0 x 1, USB 3.0 x 2,	HDMI IN x1, USB 2.0 x 1, USB 3.0 x 2,	HDMI IN x 1, USB 2.0 x 1, USB 3.0 x 2,	HDMI IN x1, USB 2.0 x 1, USB 3.0 x 2,
Audio	TOUCH 2.0 x 1, USB Type-C x 2	TOUCH 2.0 x 1, USB Type-C x 2	TOUCH 2.0 x 1, USB Type-C x 2	TOUCH 2.0 x 1, USB Type-C x 2
Control	Audio out x 1	Audio out x 1	Audio out x 1	Audio out x 1
OPS Slot	RS232 x 1	RS232 x 1	RS232 x 1	RS232 x 1
	Yes, 3840 x 2160@60fps	Yes, 3840 x 2160@60fps	Yes, 3840 x 2160@60fps	Yes, 3840 x 2160@60fps

## Camera&Audio&Microphone

Built-in camera	Yes, Single Camera	Yes, Single Camera	Yes, Single Camera	Yes, Single Camera
	48MP	48MP	48MP	48MP
Optical zoom	No	No	No	No
Camera features	Auto frame / Speaker Tracking	Auto frame / Speaker Tracking	Auto frame / Speaker Tracking	Auto frame / Speaker Tracking
Built-in speakers	2.1 channel, 10W x 2 + 20W	2.1 channel, 10W x 2 + 20W	2.1 channel, 10W x 2 + 20W	2.1 channel, 10W x 2 + 20W
Microphone array	8 x far-field, beam-forming mic	8 x far-field, beam-forming mic	8 x far-field, beam-forming mic	8 x far-field, beam-forming mic
	max 8m range	max 8m range	max 8m range	max 8m range

## Power

Power supply	AC100-240V, 50/60Hz	AC100-240V, 50/60Hz	AC100-240V, 50/60Hz	AC100-240V, 50/60Hz
Max power consumption	300W	350W	400W	400W
Standby	≤0.5W	≤0.5W	≤0.5W	≤0.5W

## Features

Ambient light sensor	Yes	Yes	Yes	Yes
Energy Star	No	No	No	No

**MAXHUB**

 [sales@maxhub.com](mailto:sales@maxhub.com)

 [www.maxhub.com](http://www.maxhub.com)

 [MAXHUB](https://www.youtube.com/MaxHub)

 [MAXHUB](https://www.linkedin.com/company/maxhub)

 [MAXHUB\\_Global](https://www.facebook.com/MaxHubGlobal)

# **Commercial Display**

Indoor

# Product Types



Model NO.: A43F-A/A55F-A/A65F-A

**Android freestanding digital signage**



Model NO.: A32F-AW/A40F-AW/A43F-AW/A49F-...

**Wood-like painting digital poster**



Model NO.: S19A/S22A/S33A

**Square screen displays**



Model NO.: R236A

**Round circular screen LCD displays**



Model NO.: A32R-L/A40R-L/A43R-L

**Movable Digital A Board**



Model NO.: A32R/A40R/A43R

**Movable Digital Poster**



Model NO.: A43R-B

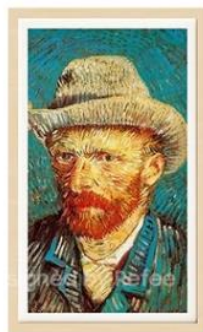
**Battery Powered Movable Digital A Board**



Model NO.: A27W-A/A32W-A/A43W-A/A49W-W...

**Slimline wall mounting advertising displays**

# Product Types



Model NO.: A27W-AF/A32W-AF/A43W-AF/A49W...

**Wooden frame LCD displays**



Model NO.: D43F-A/D55F-A/D65F-A

**Double Sided freestanding digital signage**



Model NO.: A32F-J/A40F-J/A43F-J/A49F-J/A55F...

**H-Typed freestanding digital signage**



Model NO.: A70F/A75F/A86F

**4K full screen freestanding digital signage**



Model NO.: A43F-W/A55F-W/A65F-W

**Windows freestanding digital signage**



Model NO.: A32H-B/A43H-B/A49H-B/A55H-B/A6...

**Ultra high brightness window displays**



Model NO.: A43H-L/A55H-L/A65H-L

**Ultra slim double sided displays**

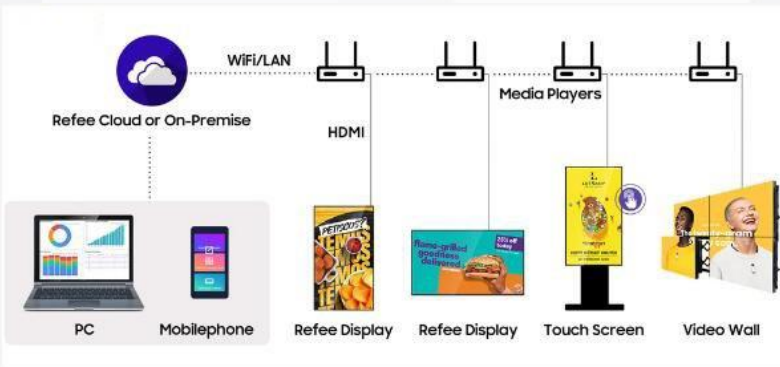


Model NO.: A43HD-B/A49HD-B/A55HD-B/A65HD...

**Ultra high brightness double-sided displays**

# Our Features

We provides high-quality screen which utilizes explosion-proof glass. Industrial high-performance screen ensures high image clarity, high brightness and stability of use. It can also be upgrade from 1080P to 4K to enjoy watching crisp and colorful images with superb clarity.



<b>Design</b>	Appearance	Project	Package	LOGO®
<b>Screen</b>	Size	Brightness	Resolution	Interface
<b>Hardware</b>	CPU	RAM	ROM	Battery
<b>System</b>	Android	Windows	Linux	Monitor
<b>Function</b>	Camera	Print&Scan	Touch	WLAN
	NFC	RFID	Payment	Solar Power

# **Commercial Display**

Outdoor





Model NO.: O32F-A/O43F-A/O49F-A/O55F-A/O6...

**Outdoor freestanding digital signage**



Model NO.: O43B-A

**Outdoor battery powered digital a board**



Model NO.: OA32R/OA38R/OA43R

**Outdoor Solar powered battery powered digital a...**



Model NO.: O32B-B/O43B-B/O55B-B

**Outdoor battery powered digital poster**



Model NO.: O32F-SC/O43F-SC/O49F-SC/O55F-S...

**Outdoor smart city freestanding digital signage**



Model NO.: O32F-B/O43F-B/O49F-B/O55F-B/O6...

**Outdoor digital advertising displays**



Model NO.: O32F-C/O43F-C/O49F-C/O55F-C/O...

**Outdoor floor standing digital signage**



Model NO.: O32F-D/O43F-D/O49F-D/O55F-D/O6...

**Outdoor digital signage**

# **Commercial Display**

## Stretched Bar Displays

# Product Types



Model NO.: BA23WR/BA35WR/BA47WR

**Stretched bar shelf edge displays**



Model NO.: BD23WR/BD24WR/BD35WR/BD36WR/...

**Digital shelf solutions stretched bar displays**



Model NO.: BA24WR/BA28WR/BA29WR/BA36WR/...

**Stretched bar ultra wide screen displays**



Model NO.: BA88WR-F

**88inch freestanding stretched bar ultra wide screen displays**



Model NO.: BA29WR

**Floor guidance double-sided stretched bar ultra wide...**

# Digital Shelf Solutions Stretched Bar Displays

Our stretched bar display (shelf edge display) digital shelf solutions with stretched bar displays & Supermarket Shelf screens display product price in real-time, helping the shopping mall promote and advertise products, to attract customers' attention through displaying videos or images in a dynamic manner. Additionally our stretched bar display (shelf edge display) digital shelf solutions support daisy chain solution, saving your cost, reduce wire layout and facilitate installation by driving up to 13 displays from one media player.

1080P  
FULLHD



Touch Optional

WIPS

Commercial Panel



24/7 Usage



REFEE DIGITAL SHELF DISPLAY SOLUTIONS



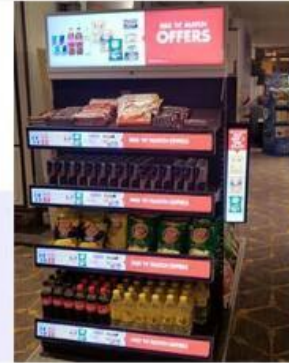
android



WiFi



Refee Cloud CMS  
Remote Control



Easy Integration  
& Easy to install

## Stretched Bar LCD Displays

23" 24" 35" 36" 47" 48"



Mass Production



Multiple Screen  
Sizes Options

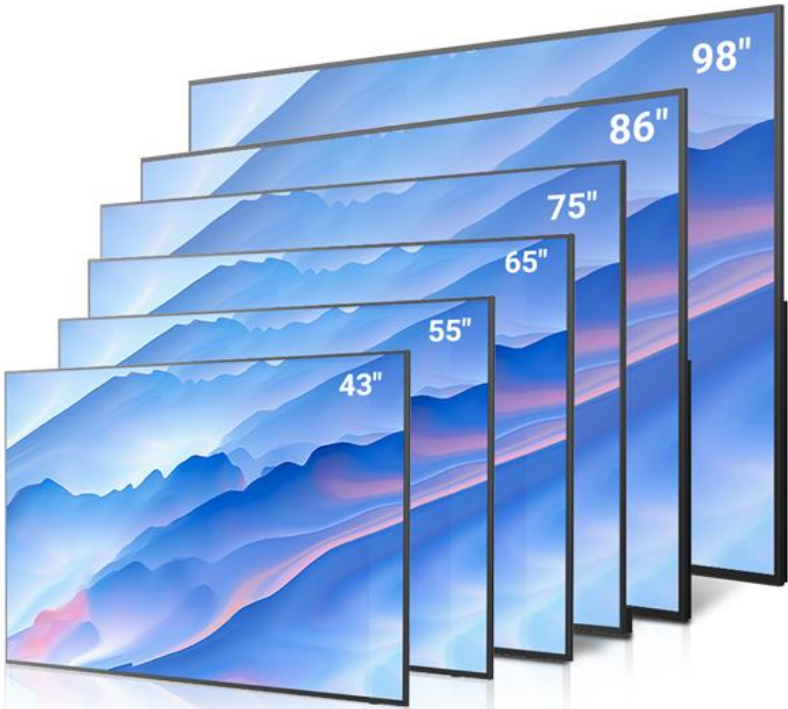


Shelf Edge Display

# **Commercial Display**

Maxhub Digital Signage

# Product details



# Product Details



## Spectacular image quality

4K resolution and high brightness guarantee graphic accuracy of every detail



## Design for bussiness

Slin bezel with high in screen size, support multiple options of connectivity



## Wireless sharing

MAXHUBshare APP offers you the ability of access and privity management while screensharing



## Win/iOS/Android

Whatever devide you use, MAXHUB Share is compatible with Windows, iOS and Android to boost your success



## Control by remote

MAXHUB DMS allow IT to manage devices remotely,from setting to content dispaly, make sure everthing under control



## Built-in player

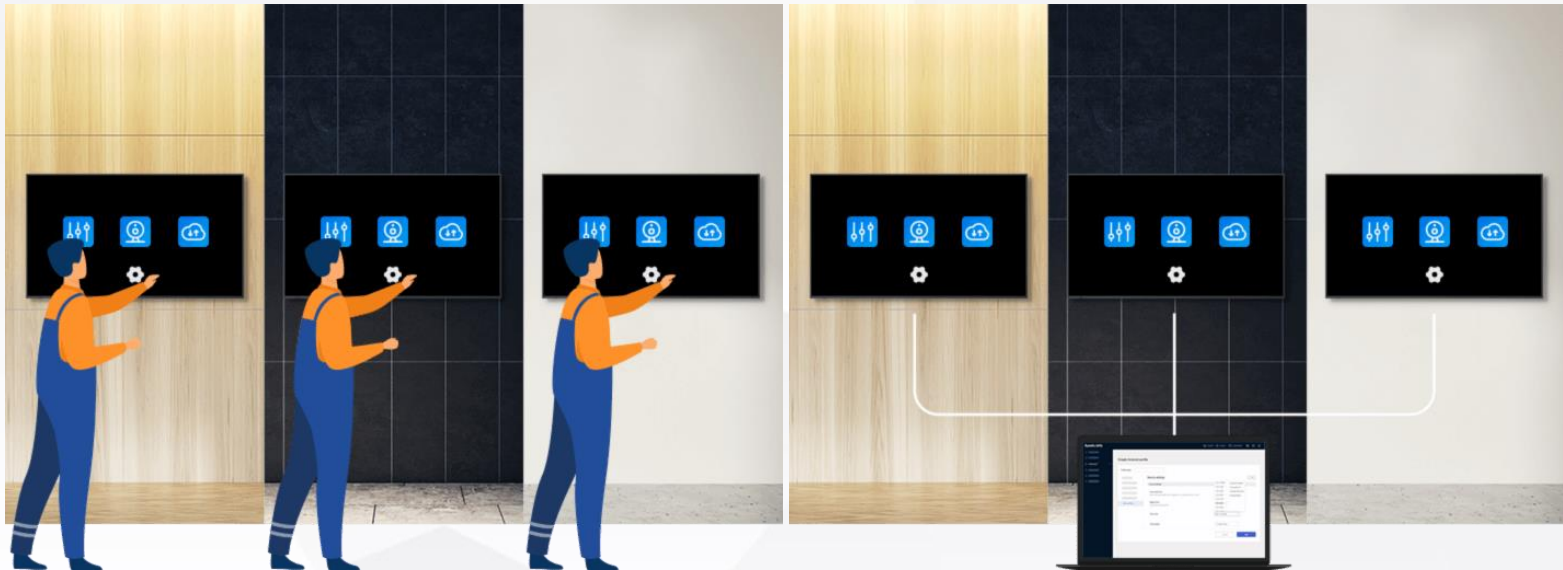
Help our client save cost when needing a display product with essential functionality of media player

# Product Details

## Bytello DMS

### Remote Device Management, Simplified

Powered by Bytello DMS, the MAXHUB Digital Signage enables easy remote device management and application configuration to ensure every meeting runs smoothly.





# Parameters

	ND43PNC	ND55PNC	ND65PNA	ND75PNA	ND86PNA	ND98PNA
PANEL						
Screen Size (class)	43"	55"	65"	75"	86"	98"
diagonal	42.5" / 107.9cm	54.6" / 138.7cm	64.5" / 163.9cm	74.5" / 189.3cm	85.6" / 217.4cm	85.6" / 247.7cm
Aspect Ratio	16:9	16:9	16:9	16:9	16:9	16:9
Native Resolution	3840*2160	3840*2160	3840*2160	3840*2160	3840*2160	3840*2160
Refresh Rate	60Hz	60Hz	60Hz	60Hz	60Hz	60Hz
Brightness(Typ.,cd/m <sup>2</sup> )	450nits	450nits	450nits	450nits	450nits	350nits
Backlight Type	Direct Lit	Direct Lit	Direct Lit	Direct Lit	Direct Lit	Direct Lit
Contrast Ratio	5000:1	5000:1	5000:1	5000:1	5000:1	5000:1
Viewing Angle (H x V)	178° (H/V)	178° (H/V)	178° (H/V)	178° (H/V)	178° (H/V)	178° (H/V)
Response Time	6.5ms	6.5ms	8ms	8ms	8ms	8ms
Life Time (Min.)	≥30000hours	≥30000hours	≥30000hours	≥30000hours	≥30000hours	≥30000hours
Operation Hours (Hours / Day)	16/7	16/7	16/7	16/7	16/7	16/7
Orientation	Portrait/Landscape	Portrait/Landscape	Landscape	Landscape	Landscape	Landscape

# **Integrated LED Wall Raptor**

Maxhub All-in-one LED

## Product Detail

### › Versatile and innovative

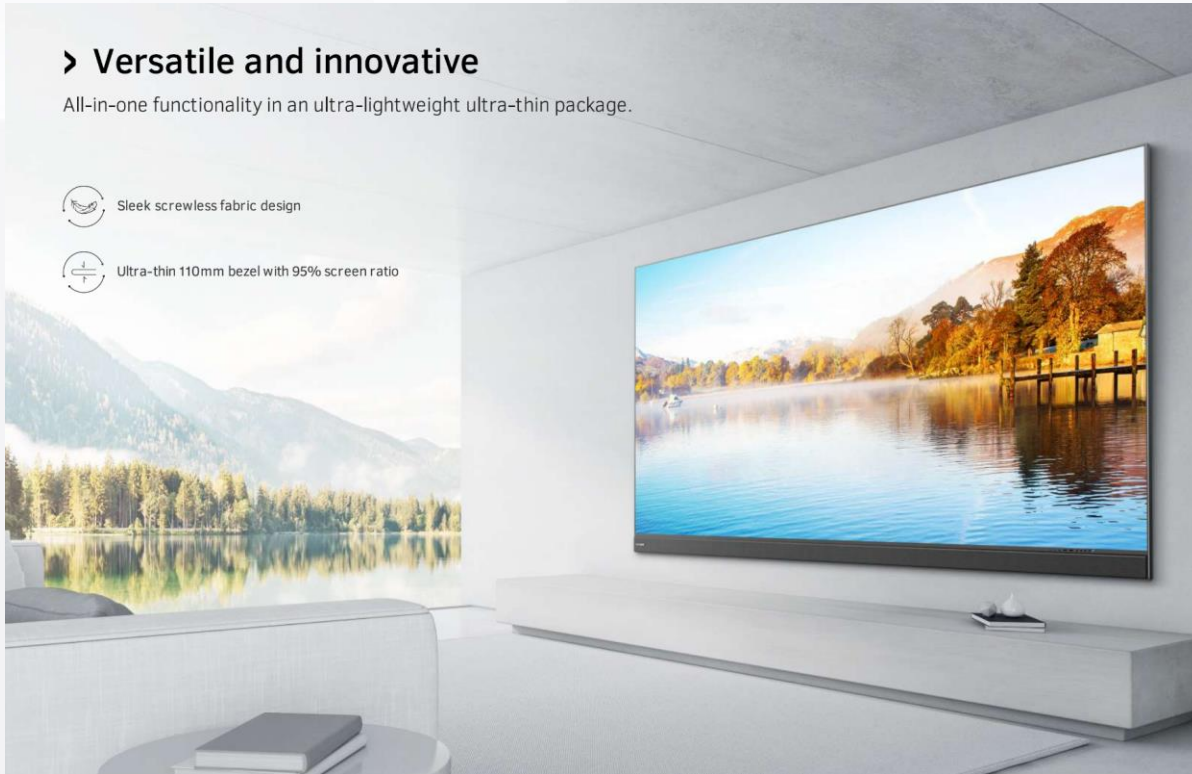
All-in-one functionality in an ultra-lightweight ultra-thin package.



Sleek screwless fabric design



Ultra-thin 110mm bezel with 95% screen ratio



## Super-Simple, Streamlined Technology

Spend less time setting up and more time collaborating.

- › Integrated video processing
- › Screen-split for up to 4 windows
- › PIP/PBP flexible display modes
- › Support for 3 x HDMI 2.0 in and 1 x HDMI 2.0 out

# Product Detail



## Plug-and-Play Installation, Simple Maintenance

The 3-in-1 design gives you everything you need in one package.

- › Control Unit: Sending Card + Android Card + Video Processor
- › Receiving Unit: Power Supply + Receiving Card + Hub Board
- › Power Unit: Power Supply + Amplifier+ Relay

› Versatile and innovative

Type-C port on the front for easy data access

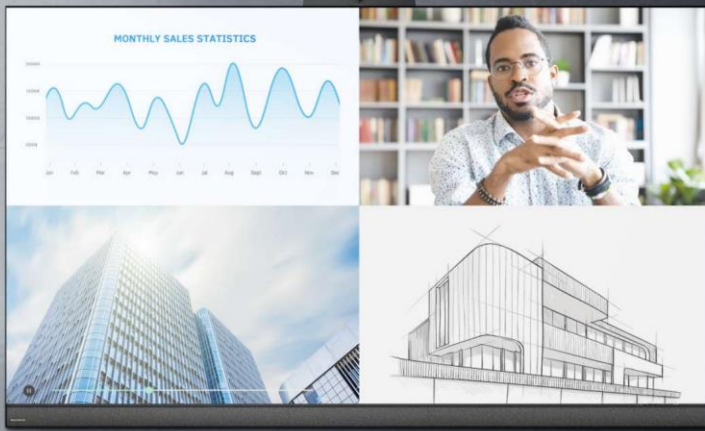
Light sensor for dynamic brightness adjustment

Ergonomically designed with the entire key board on the right

## Product Detail

### > Super simple and streamlined technology

Enjoy the perfect presentation or communication experience with minimal setup time.



Integrated video processing



Screen-split for up to 4 windows



PIP/PBP flexible display modes



Support for 3 x HDMI 2.0 in and 1 x HDMI 2.0 out

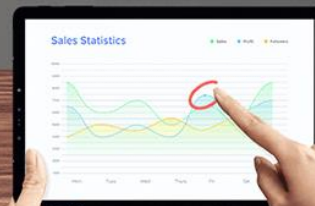
## Easy Collaboration

Ensure seamless connections through the most up-to-date operating systems and built-in sharing features.

- > Built-in Android 9.0
- > LAN screen-sharing for up to 4 windows
- > Low-latency stable mirroring support

# Exceptional Control with MAXConfig

The exclusive MAXConfig software provides easy control and intuitive access to all interactive features of the integrated LED wall solution through your personal device. You can even extend functionality to your third-party system.



## Multiple Indoor Mounting Options



Ceiling-hanging



Mobile Stand-mounting



Wall-mounting

\*Mobile Stand-mounting only support 120", 138" and 150"

# Parameters

Model	LA120V03	LA120V07	LA138V06	LA138V07	LA150V07	LA165V07	LA180V07	LA220V07	LA220V18
Size(Inch)	120	120	138	138	150	165	180	220	220
Pixel Pitch(mm)	2	1.3	1.9	1.5	1.7	1.9	2	2.5	1.2
Resolution	1280*720	1920*1080	1600*900	1920*1080	1920*1080	1920*1080	1920*1080	1920*1080	3840*2160
Overall Size(W*H*D*mm)	2678*1616*300	2678*1616*301	3064*1832*301	3064*1832*301	3344*1990*300	33674*2175*301	4010*2365*300	4894*2861*301	4894*2861*301
Overall Size(W*H*D*ft)	8.9*5.6*0.1	8.9*5.6*0.1	10*6*0.1	10*6*0.1	11*6.5*0.1	12.1*7.1*0.1	13.2*7.8*0.1	16.1*9.4*0.1	16.1*9.4*0.1
Weight(KG)	90	90	135	135	135	190	190	330	330
Weight(lbs)	198.4	198.4	297.6	297.6	297.6	418.9	418.9	727.6	727.6
Power Requirement(Max/Ave)	1.23/0.42	1.53/0.52	1.71/0.58	1.87/0.64	1.98/0.67	2.46/0.83	2.77/0.94	4.44/1.51	6.48/2.20



# **Transparent OLED**



SCREEN SIZE 55"

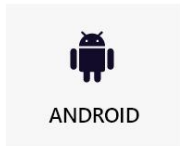
PANEL TECHNOLOGY OLED

NATIVE RESOLUTION 1,920 × 1,080 (FHD)

BRIGHTNESS 320cd/m<sup>2</sup>(TYP.)

DESKTOP /  
FLOOR STANDING

MULTIPLE SOLUTIONS



## TRANSPARENT OLED SIGNAGE



### HIGH TRANSPARENCY

OLED technology gives the Transparent OLED Signage a slimmer structure without a backlight unit nor a liquid crystal layer, achieving a high transparency of 38%, much higher than conventional LCD transparent displays (10%).

### ACCURATE AND VIVID COLORS

Featuring self-lighting pixels, the display maintains vivid colors and a high contrast ratio(150000:1)even when the display becomes transparent. It brings content to life from wide viewing angles, and the content blends into its surroundings seamlessly and naturally.

### PROTECTIVE TEMPERED GLASS

The tempered glass in front protects the product from such external impacts and its anti-shatter glass is designed to minimize customers' injuries.

## Why Transparent OLED?

### High transparency

The organic light emitting diodes arranged to configure each pixel on the transparent OLED display panel emit light on their own, so the display panel renders vivid, high-quality images without using a backlight. Furthermore, its wide viewing angle enables clear viewing of the displayed image even from an oblique angle.



### Achieves compact installation with a thin structure

In addition, OLED is a self-luminous display that does not require a backlight, so it can be utilised for compact installations.

Display Thickness  
55ZT100: 3.8 mm (without dimming unit)



Thank you for your time!

Any enquiry please call us @ 67499810 or  
email us at [sales@audax.com.sg](mailto:sales@audax.com.sg)  
63 Ubi Avenue 1, #07-02, 63@Ubi, Singapore 408937